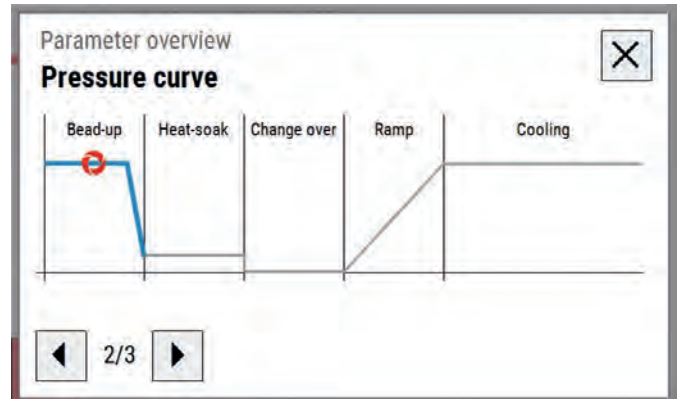
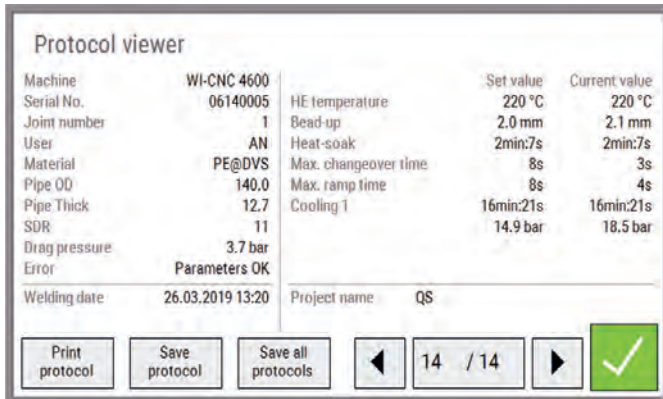


# WI-CNC® 6.0

## THE NEXT GENERATION OF CNC-WELDING



WIDOS presents the next generation of CNC welding: WI-CNC® 6.0. The new control unit features full process reliability, excellent compatibility, smart technology and is extremely user friendly.



### Full process reliability

Advanced monitoring of the WI-CNC® 6.0 ensures consistent process reliability. All commonly used welding standards are available (ASTM, DVS, ISO, PROFUSE, WIS, INSTA, NORDIC). Welding according to the chosen standard becomes an easy task with display notifications.

All welding parameters are monitored and logged automatically during the welding process, exceeding the requirements of ASTM F3124. The control unit holds the capacity for over 90,000 welds, which can be saved on USB stick in PDF format. Up to 20 different projects can be created and selected directly, which assures exact traceability to each project. Accessing the control unit requires the identification of the operator for accurate traceability. Traceability barcodes according to ISO 12176-4 can be entered and processed easily with the optionally available barcode scanner.

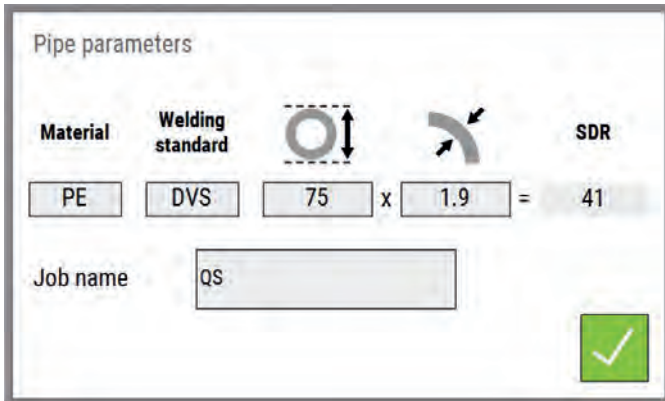
### Smart technology

The programming of the WI-CNC® 6.0 has been designed with users' requirements in mind. All relevant welding data is readily visible through the *ParameterOverview*. The overview adapts to the welding process and shows data applicable to the current state of welding. In addition, the WI-CNC® 6.0 contains many additional functions that facilitate the welding process. The *SlopeControl*, for example, ensures compliant welding during heat-up on an uneven ground, despite stronger drag forces. The pressure curve visualizes the current state of the weld. In the *EcoMode*, the heating element switches to a standby temperature and ensures low power consumption. The advanced weather ability allows the controller to be fully operational from 0° C to 50° C (30° F to 120° F). The weatherproof display is also suited for harsh environments and has an International Protection Code of IP65.

The WI-CNC® 6.0 *PowerLineTechnology* controls the heating element by combining the power line with the data line. The temperature of the heating element is regulated automatically, regardless of the outside temperature, wind or other environmental conditions. Temperature data from the heating element is recorded in the weld log.

Technical data	Hydraulic control unit	compatible with*	Pipe diameter* OD (mm)	Voltage (Volts)	Power (kW)	Welding standard*
WI-CNC® 6.0 (Art.-no. 106060021)		WIDOS 4400	50 – 160	230	3,3	ASTM, DVS, WIS, ISO, PROFUSE, INSTA, NORDIC
		WIDOS 4600	75 – 250	230	3,6	
		WIDOS 4900	90 – 315	230	3,6	
		WIDOS 4911	90 – 355	230	3,6	
		WIDOS 4955	90 – 355	230	3,6	
		WIDOS 5100	200 – 450	230	3,6	
WI-CNC® 6.0 Model 16A (Art.-no. 10606002316)		WIDOS 5500	200 – 500	230/3ph	8,4	ASTM, DVS, WIS, ISO, PROFUSE, INSTA, NORDIC
		WIDOS 6100	315 – 630	230/3ph	8,5	
		WIDOS 6113	315 – 630	230/3ph	8,5	

\*others on request  
Subject to technical modifications



### Extremely user friendly

Operating the control unit is extremely user friendly. The self-explanatory menu and icons ensure effortless program navigation. The brilliant 7" color touch screen is very easy to read. A large alphanumeric keypad and *QuickSelectButtons* make data entry — even with gloves — easy and fast. Important project data or welding parameters can be directly selected and entered. Several different languages are available for operators, making it easy to use in many countries.

The WI-CNC® 6.0 monitors the maintenance schedule, making the next service appointment visible on the screen. The WI-CNC® 6.0 will signal when the maintenance is due as well as letting the operator know when the maintenance interval has been exceeded.

### Excellent compatibility

Outstanding compatibility with multiple WIDOS basic machines is a key feature of the WI-CNC® 6.0. The modular concept reduces the investment costs and enables welding of pipes or twin wall pipes from OD 50 to OD 630. Machines from WIDOS 4400 to WIDOS 6113 can be coupled with the WI-CNC® 6.0. Hydraulic models of these basic machines can be upgraded for use with the CNC unit, other models are available on request. Additionally, the WI-CNC® 6.0 heating element can also be used with all hydraulic WIDOS machines.

### Sustainability

The WI-CNC® 6.0 was developed according to the latest technical and ecological standards. In the *EcoMode*, the heating element switches to a standby temperature and ensures low power consumption. Updated with the most advanced fusion technology, WIDOS is combining the best technology while achieving minimal carbon footprint.

### Special features

	WI-CNC® 6.0 (Art.-no. 106060021)	WI-CNC® 6.0 Model 16A (Art.-no. 10606002316)
<i>ParameterOverview</i>	•	•
<i>SlopeControl</i>	•	•
<i>QuickSelectButtons</i>	•	•
<i>PowerLineTechnology</i>	•	•
<i>EcoMode</i>	•	•

### Extensions

A label printer for the WI-CNC® 6.0 is optionally available. The WI-CNC® 6.0 is extendable with a barcode scanner.

**WIDOS Wilhelm Dommer Söhne GmbH**  
Einsteinstraße 5  
71254 Ditzingen

Fon: +49 7152 99390  
Fax: +49 7152 993940

[info@widos.de](mailto:info@widos.de)  
[www.widos.de](http://www.widos.de)

05/2019  
Subject to technical modifications

